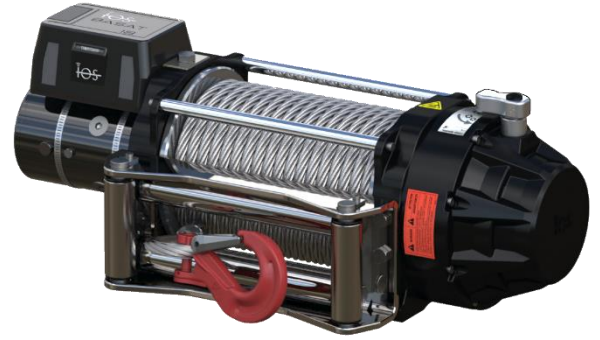


| MODEL CODE | PART NUMBER | MOTOR TYPE |
|----------------------|-------------|------------|
| BASAT 18 TE8T2112 | 105212 | 24V DC |

STANDARD COMPLIANCE

EN14492-2 :2019*, SAE J706
2006/42/EC - EN ISO 121000 :2010, ISO 7637-2 :2004
2014/30/EU – EN50498 :2010, ISO7637-2 :2011, CISPR 25: 2008
* Conforms with exceptions



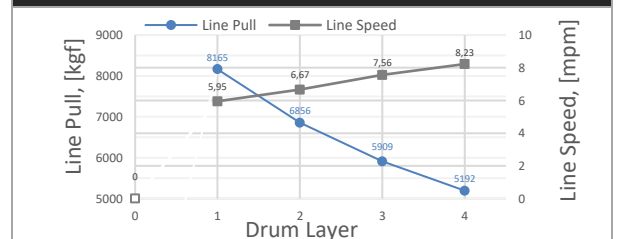
WINCH SPECIFICATIONS

| | | |
|-------------------------------------|-------------------------------------|--------------|
| Rated Pulling Force | 8165 kgf | 18000 lbf |
| Drum Barrel Diameter | 105 mm | 4.13 in |
| Drum Width | 252.7 mm | 9.95 in |
| Evaluated Rope Diameter | 13 mm | 1/2 in |
| Maximum Wire Rope Diameter | 13 mm | 1/2 in |
| Minimum Wire Rope Breaking Strength | 12200 kgf | 26900 lbf |
| Recommended Wire Rope Type | 7 x 19 WSC | |
| Maximum Layers of Wire Rope | 4 | |
| Gear Train, Reduction | 3 Stage Planetary, 329,5:1 | |
| Mounting Bolt Size | M12 X 1.75 Class 8.8 | |
| Mounting Bolt Torque | 63-69 Nm | 46-51 lbf-ft |
| Duty Cycle (per EN 1449-2) | 15.6 m | 51.2 ft |
| Approximate Shipping Weight | 52 kg | 114.63 lb |
| Brake Type | Automatic Mechanical Brake | |
| Sealing | IP68 | |
| UV Rating | 1200kJ/m ² per ASTM G154 | |
| Corrosion Resistance | 408 hrs per ASTM B117 | |
| Operating Temperature | -40°C to +60°C (-25.6°F to 131°F) | |
| Decibels | 95 Db | |

PERFORMANCE BY LAYER

| Drum Layer | Line Pull | Line Speed | Rope Capacity |
|------------|--------------|--------------|---------------|
| | kgf / lbf | mpm / fpm | m / ft |
| 1 | 8165 / 18000 | 5.95 / 19.32 | 5.5 / 18.04 |
| 2 | 6856 / 15115 | 6.67 / 23.00 | 11.6 / 38.06 |
| 3 | 5909 / 13030 | 7.56 / 26.67 | 19.2 / 62.99 |
| 4 | 5192 / 11450 | 8.23 / 30.38 | 27.3 / 89.57 |

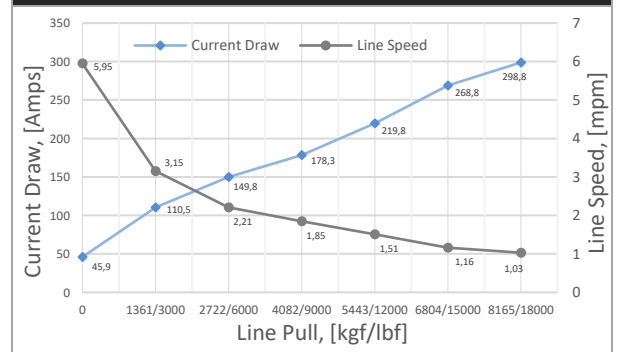
PERFORMANCE BY LAYER



FIRST LAYER PERFORMANCE

| Line Pull | Line Speed | Current Draw | Duty Cycle |
|--------------|--------------|--------------|------------|
| kgf / lbf | mpm / fpm | Amps | min/10min |
| 0 | 5.95 / 19.52 | 45.9 | 4:00 |
| 1361 / 3000 | 3.15 / 10.33 | 110.5 | 2:00 |
| 2722 / 6000 | 2.21 / 7.25 | 149.8 | 1:20 |
| 4082 / 9000 | 1.85 / 6.07 | 178.3 | 0:45 |
| 5443 / 12000 | 1.51 / 4.95 | 219.8 | 0:40 |
| 6804 / 15000 | 1.16 / 3.81 | 268.8 | 0:15 |
| 8165 / 18000 | 1.03 / 3.38 | 298.9 | 0:05 |

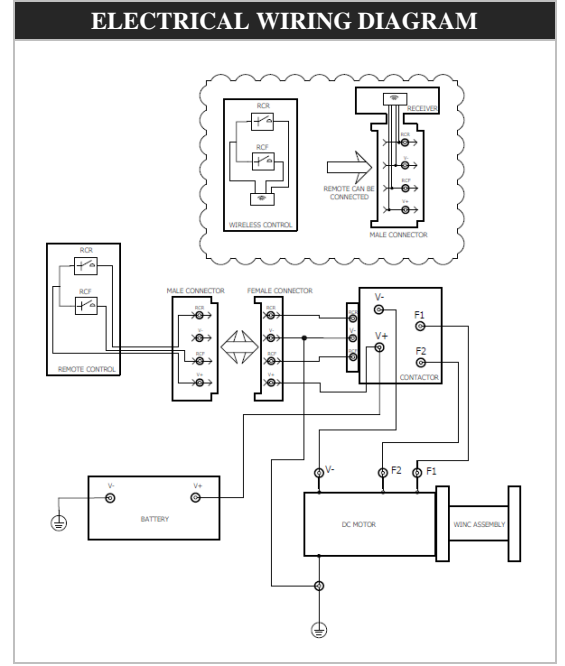
FIRST LAYER PERFORMANCE



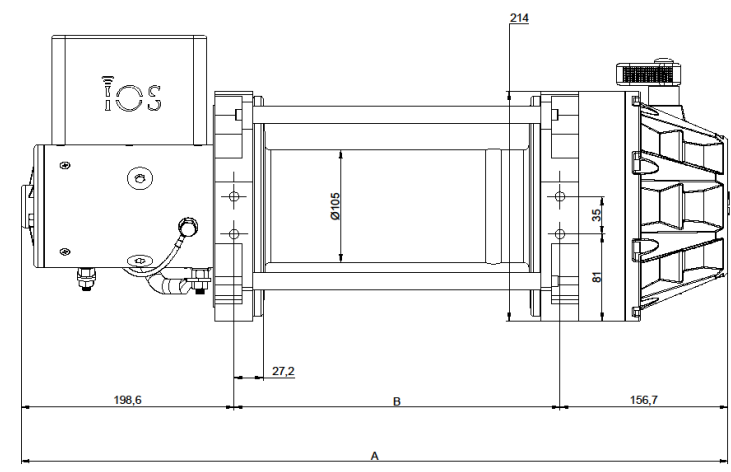
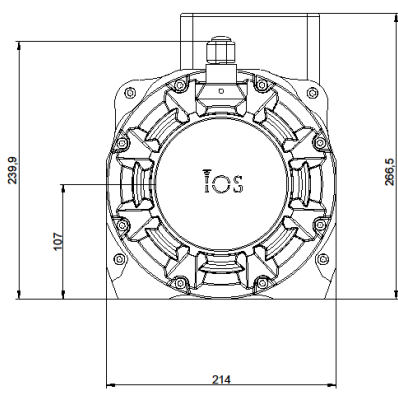
| MODEL CODE | PART NUMBER | MOTOR TYPE |
|----------------------|-------------|------------|
| BASAT 18 TE8T2112 | 105212 | 24V DC |

| ELECTRICAL SYSTEM REQUIREMENTS | |
|--------------------------------|---------|
| Battery Voltage | 24V |
| Minimum Battery Rating | 500 CCA |

| DRUM CAPACITY BY LAYER, ft / m | | | | |
|--------------------------------|----------------|----------------|-----------------|-----------------|
| DRUM LENGTH | | | | |
| | 6,5" | 8" | 10" | 12,5" |
| Rope Dia. | 13mm | 13mm | 13mm | 13mm |
| Layer | 1/2" | 1/2" | 1/2" | 1/2" |
| 1 | 4,40 14,44 | 5,50 18,04 | 6,60 21,65 | 8,50 27,89 |
| 2 | 9,20 30,18 | 11,60 38,06 | 14,50 47,57 | 18,60 61,02 |
| 3 | 15,30 50,20 | 19,20 62,99 | 23,20 76,12 | 29,80 97,77 |
| 4 | 21,40 70,21 | 27,30 89,57 | 32,10 105,31 | 40,80 133,86 |



DIMENSIONAL DRAWING



| DRUM SIZE | UNITS | A | B |
|-----------|-------|-------|-------|
| 6.5" | mm | 571.3 | 216.0 |
| | in | 22.5 | 8.5 |
| 8" | mm | 609.3 | 254.0 |
| | in | 24.0 | 10.0 |
| 10" | mm | 659.8 | 304.5 |
| | in | 26.0 | 12.0 |
| 12.5" | mm | 723.3 | 368.0 |
| | in | 28.5 | 14.5 |

