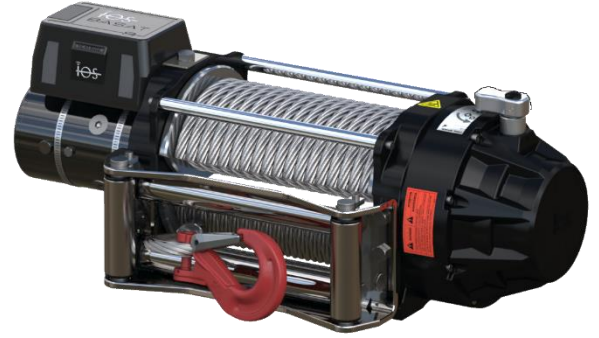


MODEL CODE	PART NUMBER	MOTOR TYPE
BASAT 9 TE4T2111	102211	12V DC

STANDARD COMPLIANCE

EN14492-2 :2019*, SAE J706
2006/42/EC - EN ISO 121000 :2010, ISO 7637-2 :2004
2014/30/EU – EN50498 :2010, ISO7637-2 :2011, CISPR 25: 2008
* Conforms with exceptions



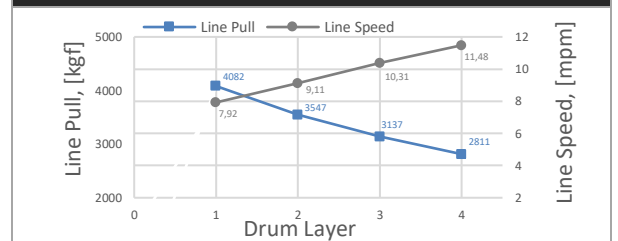
WINCH SPECIFICATIONS

Rated Pulling Force	4082 kgf	9000 lbf
Drum Barrel Diameter	105 mm	4.13 in
Drum Width	252.7 mm	9.95 in
Evaluated Rope Diameter	10 mm	3/8 in
Maximum Wire Rope Diameter	13 mm	1/2 in
Minimum Wire Rope Breaking Strength	7668 kgf	16905 lbf
Recommended Wire Rope Type	6 x 29 IWRC	
Maximum Layers of Wire Rope	4	
Gear Train, Reduction	3 Stage Planetary, 251.1:1	
Mounting Bolt Size	M12 X 1.75 Class 8.8	
Mounting Bolt Torque	63-69 Nm	46-51 lbf-ft
Duty Cycle (per EN 1449-2)	3.3 m	10.8 ft
Approximate Shipping Weight	55.6 kg	122.6 lb
Brake Type	Automatic Mechanical Brake	
Sealing	IP68	
UV Rating	1200kJ/m ² per ASTM G154	
Corrosion Resistance	408 hrs per ASTM B117	
Operating Temperature	-40°C to +60°C (-25.6°F to 131°F)	
Decibels	95 Db	

PERFORMANCE BY LAYER

Drum Layer	Line Pull	Line Speed	Rope Capacity
	kgf / lbf	mpm / fpm	m / ft
1	4082 / 9000	7.92 / 25.98	6.8 / 22.3
2	3547 / 7820	9.11 / 29.89	14.3 / 46.9
3	3137 / 6915	10.31 / 33.83	23.2 / 76.1
4	2811 / 6200	11.48 / 37.66	32.6 / 107.0

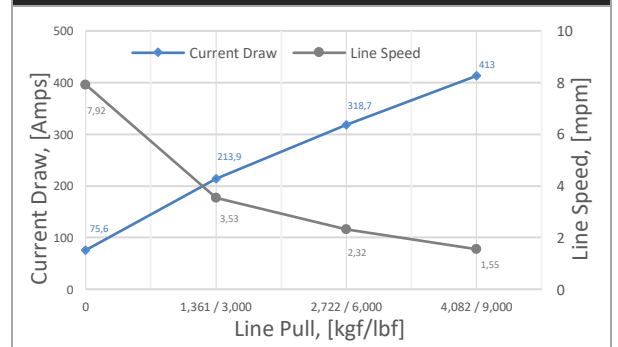
PERFORMANCE BY LAYER



FIRST LAYER PERFORMANCE

Line Pull	Line Speed	Current Draw	Duty Cycle
kgf / lbf	mpm / fpm	Amps	min/10min
0	7.92 / 25.98	75.6	5:00
1361 / 3000	3.53 / 11.58	213.9	2:15
2722 / 6000	2.32 / 7.61	318.7	1:00
4082 / 9000	1.55 / 5.08	413.0	0:30

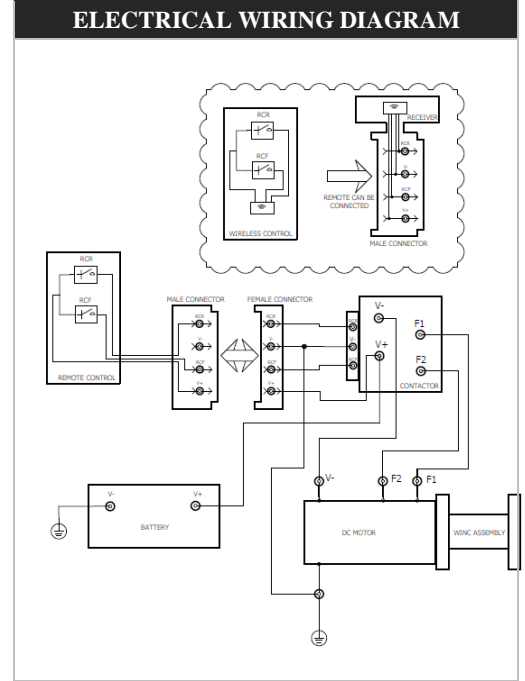
FIRST LAYER PERFORMANCE



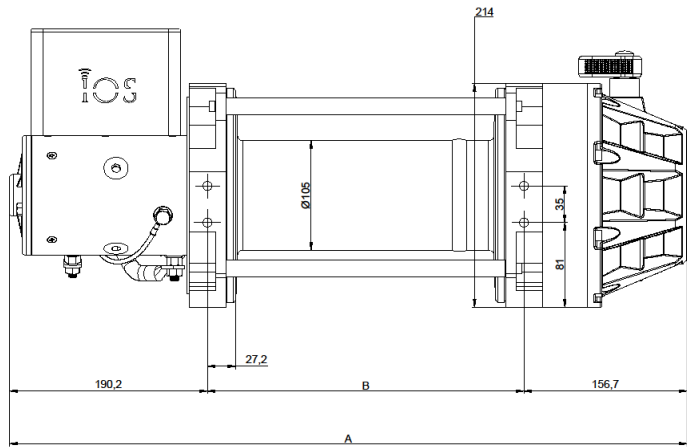
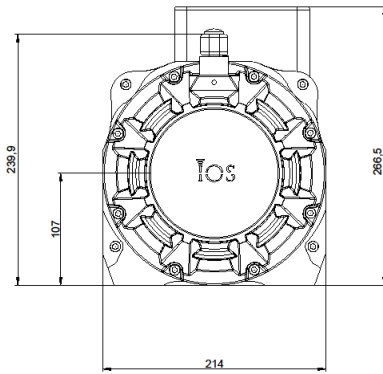
MODEL CODE	PART NUMBER	MOTOR TYPE
BASAT 9 TE4T2111	102211	12V DC

ELECTRICAL SYSTEM REQUIREMENTS	
Battery Voltage	12V
Minimum Battery Rating	650 CCA

DRUM CAPACITY BY LAYER, m / ft													
		DRUM LENGTH											
		6,5"			8"			10"			12,5"		
Layer	Rope Dia	10 mm	11 mm	13 mm	10 mm	11 mm	13 mm	10 mm	11 mm	13 mm	10 mm	11 mm	13 mm
		3/8 in	7/16 in	1/2 in	3/8 in	7/16 in	1/2 in	3/8 in	7/16 in	1/2 in	3/8 in	7/16 in	1/2 in
1		5,2	5,1	4,40	6,8	6,2	5,50	9,9	7,6	6,6	10,8	9,8	8,5
		17,1	16,7	14,4	22,3	20,3	18,0	32,5	24,9	21,6	35,4	32,2	27,8
2		10,9	10,6	9,20	14,3	13,0	11,6	16,8	16,5	14,5	22,8	21,1	18,6
		35,8	34,8	30,2	46,9	42,7	38,1	55,1	54,1	47,5	74,8	62,2	61,0
3		17,7	16,9	15,3	23,2	21,2	19,2	18,6	26,2	23,2	36,9	33,7	29,8
		58,1	55,5	50,2	76,1	69,6	63,0	61,0	86,0	76,1	121,1	110,6	97,7
4		24,6	23,5	21,4	32,6	30,4	27,3	39,2	36,7	32,1	51,4	48,4	40,8
		80,7	77,1	70,2	107,0	99,7	89,5	128,6	120,4	105,3	168,6	158,8	133,9



DIMENSIONAL DRAWING



DRUM SIZE	UNITS	A	B
6.5"	mm	562.9	216.0
	in	22.2	8.5
8"	mm	600.9	254.0
	in	23.7	10.0
10"	mm	651.4	304.5
	in	25.7	12.0
12.5"	mm	714.9	368.0
	in	28.2	14.5

