

MODEL CODE	PART NUMBER	MOTOR TYPE
BASAT 12 TE6T2112	103212	24V DC

## STANDARD COMPLIANCE

EN14492-2 :2019\*, SAE J706  
2006/42/EC - EN ISO 121000 :2010, ISO 7637-2 :2004  
2014/30/EU – EN50498 :2010, ISO7637-2 :2011, CISPR 25: 2008  
\* Conforms with exceptions



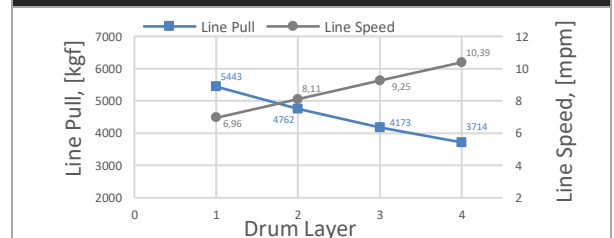
## WINCH SPECIFICATIONS

Rated Pulling Force	5443 kgf	12000 lbf
Drum Barrel Diameter	105 mm	4.13 in
Drum Width	252.7 mm	9.95 in
Evaluated Rope Diameter	11.2 mm	7/16 in
Maximum Wire Rope Diameter	13 mm	1/2 in
Minimum Wire Rope Breaking Strength	9610 kgf	21200 lbf
Recommended Wire Rope Type	6 x 29 IWRC	
Maximum Layers of Wire Rope	4	
Gear Train, Reduction	3 Stage Planetary, 279.2:1	
Mounting Bolt Size	M12 X 1.75 Class 8.8	
Mounting Bolt Torque	63-69 Nm	46-51 lbf-ft
Duty Cycle (per EN 1449-2)	16.8 m	55.1 ft
Approximate Shipping Weight	50.9 kg	111.2 lb
Brake Type	Automatic Mechanical Brake	
Sealing	IP68	
UV Rating	1200kJ/m <sup>2</sup> per ASTM G154	
Corrosion Resistance	408 hrs per ASTM B117	
Operating Temperature	-40°C to +60°C (-25.6°F to 131°F)	
Decibels	95 Db	

## PERFORMANCE BY LAYER

Drum Layer	Line Pull	Line Speed	Rope Capacity
	kgf / lbf	mpm / fpm	m / ft
1	5443 / 12000	6.96 / 22.83	6.2 / 20.3
2	4762 / 10498	8.11 / 26.61	13.0 / 42.7
3	4173 / 9199	9.25 / 30.35	21.2 / 69.6
4	3714 / 8187	10.39 / 34.09	30.4 / 99.7

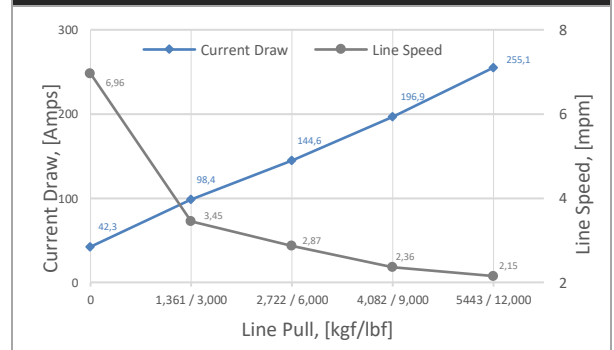
## PERFORMANCE BY LAYER



## FIRST LAYER PERFORMANCE

Line Pull	Line Speed	Current Draw	Duty Cycle
kgf / lbf	mpm / fpm	Amps	min/10min
0	6.96 / 22.83	42.3	5:00
1,361 / 3,000	3.45 / 11.32	98.4	2:10
2,722 / 6,000	2.87 / 9.42	144.6	1:20
4,082 / 9,000	2.36 / 7.74	196.9	0:40
5443 / 12,000	2.15 / 7.05	255.1	0:20

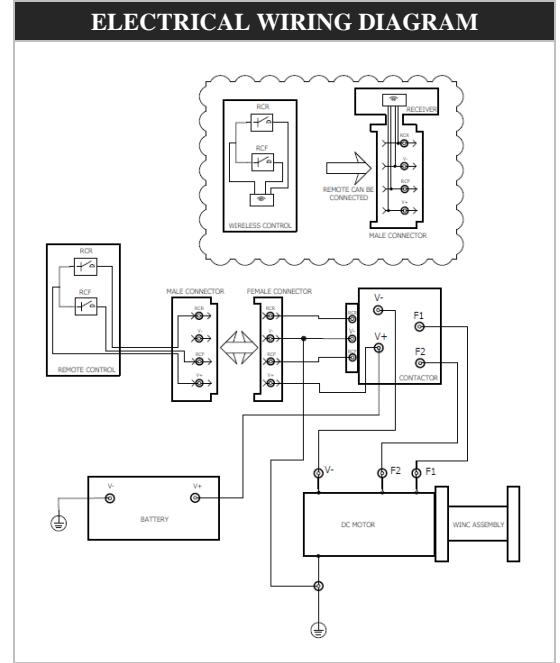
## FIRST LAYER PERFORMANCE



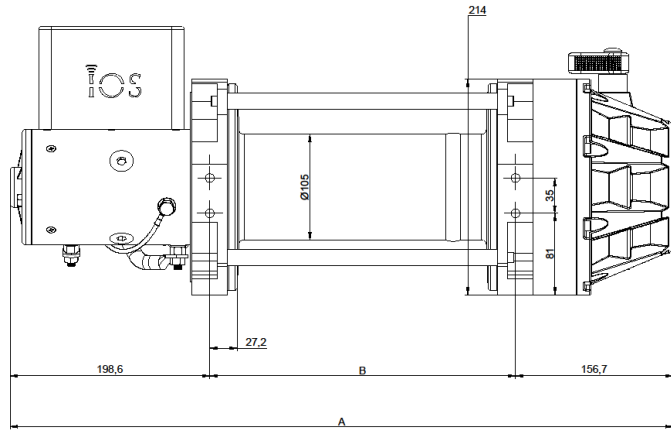
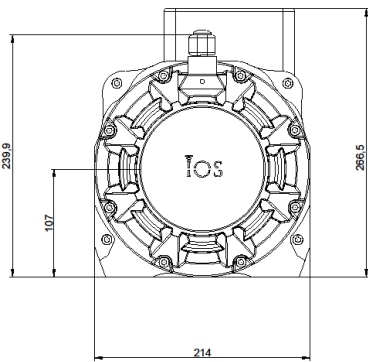
MODEL CODE	PART NUMBER	MOTOR TYPE
BASAT 12 TE6T2112	103212	24V DC

ELECTRICAL SYSTEM REQUIREMENTS	
Battery Voltage	24V
Minimum Battery Rating	500 CCA

DRUM CAPACITY BY LAYER, m / ft									
DRUM LENGTH									
		6,5"		8"		10"		12.5"	
Layer	Rope Dia.	11mm	13mm	11mm	13mm	11mm	13mm	11mm	13mm
		3/8in	1/2in	3/8in	1/2in	3/8in	1/2in	3/8in	1/2in
1		5.1	4.4	6.2	5.5	7.6	6.6	9.8	8.5
		16.7	14.4	20.3	18.0	24.9	21.7	32.2	27.9
2		10.6	9.2	13.0	11.6	16.5	14.5	21.1	18.6
		34.8	30.2	42.7	38.1	54.1	47.6	69.2	61.0
3		16.9	15.3	21.2	19.2	26.2	23.2	33.7	29.8
		55.4	50.2	69.6	63.0	86.0	76.1	110.6	97.8
4		23.5	21.4	30.4	27.3	36.7	32.1	48.4	40.8
		77.1	70.1	99.7	89.6	120.4	105.3	158.8	133.9



### DIMENSIONAL DRAWING



DRUM SIZE	UNITS	A	B
6.5"	mm	571.3	216.0
	in	22.5	8.5
8"	mm	609.3	254.0
	in	24.0	10.0
10"	mm	659.8	304.5
	in	26.0	12.0
12.5"	mm	723.3	368.0
	in	28.5	14.5

