

MODEL CODE	PART NUMBER	MOTOR TYPE
BASAT 15 TE7T2111	104211	12V DC

## STANDARD COMPLIANCE

EN14492-2 :2019\*, SAE J706  
2006/42/EC - EN ISO 121000 :2010, ISO 7637-2 :2004  
2014/30/EU – EN50498 :2010, ISO7637-2 :2011, CISPR 25: 2008  
\* Conforms with exceptions



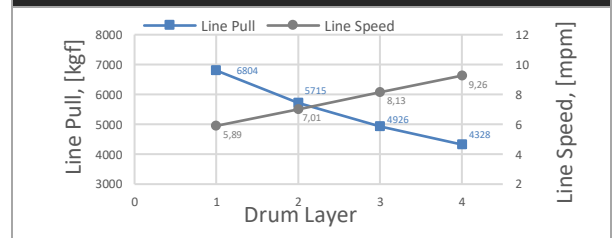
## WINCH SPECIFICATIONS

Rated Pulling Force	6804 kgf	15000 lbf
Drum Barrel Diameter	105 mm	4.13 in
Drum Width	252.7 mm	9.95 in
Evaluated Rope Diameter	13 mm	1/2 in
Maximum Wire Rope Diameter	13 mm	1/2 in
Minimum Wire Rope Breaking Strength	12200 kgf	26900 lbf
Recommended Wire Rope Type	7 x 19 WSC	
Maximum Layers of Wire Rope	4	
Gear Train, Reduction	3 Stage Planetary, 329.5:1	
Mounting Bolt Size	M12 X 1.75 Class 8.8	
Mounting Bolt Torque	63-69 Nm	46-51 lbf-ft
Duty Cycle (per EN 1449-2)	3.8 m	12.4 ft
Approximate Shipping Weight	56.2 kg	123.9 lb
Brake Type	Automatic Mechanical Brake	
Sealing	IP68	
UV Rating	1200kJ/m <sup>2</sup> per ASTM G154	
Corrosion Resistance	408 hrs per ASTM B117	
Operating Temperature	-40°C to +60°C (-25.6°F to 131°F)	
Decibels	95 Db	

## PERFORMANCE BY LAYER

Drum Layer	Line Pull	Line Speed	Rope Capacity
	kgf / lbf	mpm / fpm	m / ft
1	6804 / 15000	5.89 / 19.32	5.5 / 18.1
2	5715 / 12600	7.01 / 23.0	11.6 / 38.1
3	4926 / 10860	8.13 / 26.67	19.2 / 63.0
4	4328 / 9542	9.26 / 30.38	27.3 / 89.6

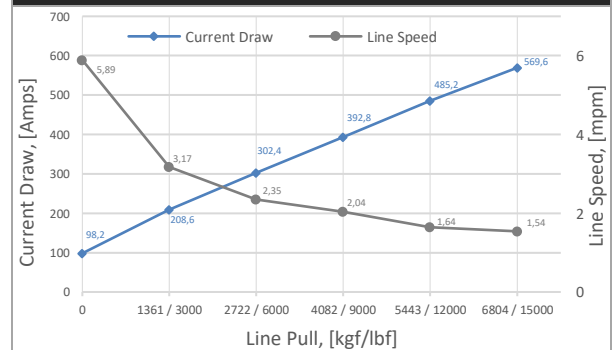
## PERFORMANCE BY LAYER



## FIRST LAYER PERFORMANCE

Line Pull	Line Speed	Current Draw	Duty Cycle
kgf / lbf	mpm / fpm	Amps	min/10min
0	5.89 / 19.32	98.2	2:40
1361 / 3000	3.17 / 10.4	208.6	1:55
2722 / 6000	2.35 / 7.71	302.4	1:20
4082 / 9000	2.04 / 6.69	392.8	1:05
5443 / 12000	1.64 / 5.38	485.2	0:50
6804 / 15000	1.54 / 5.05	569.6	0:35

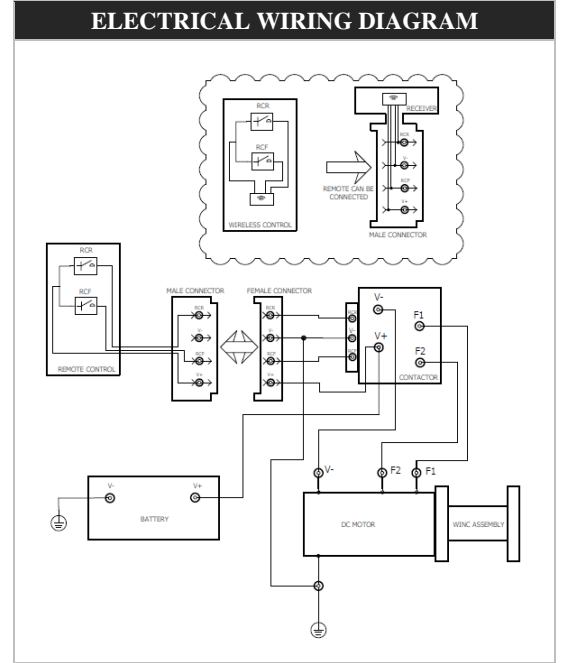
## FIRST LAYER PERFORMANCE



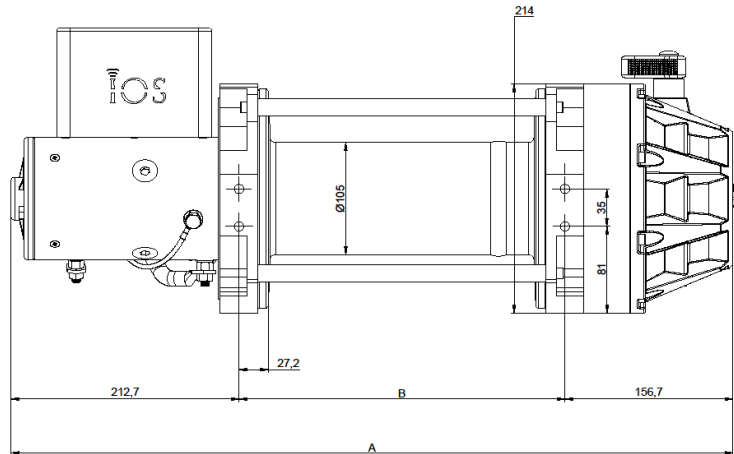
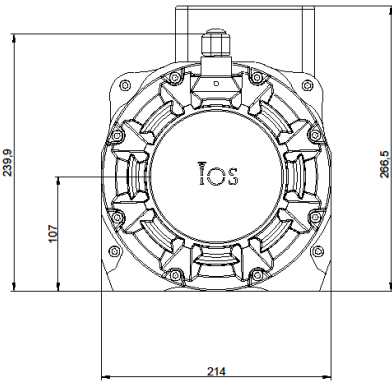
MODEL CODE	PART NUMBER	MOTOR TYPE
BASAT 15 TE7T2111	104211	12V DC

ELECTRICAL SYSTEM REQUIREMENTS	
Battery Voltage	12V
Minimum Battery Rating	650 CCA

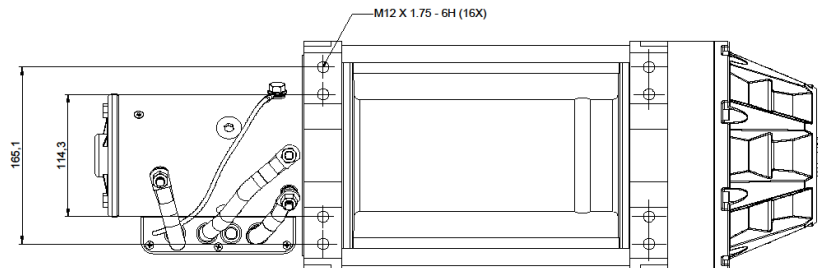
DRUM CAPACITY BY LAYER, m / ft					
DRUM LENGTH					
Layer	Rope Dia.	6,5"	8"	10"	12,5"
		13 mm 1/2 in	13 mm 1/2 in	13 mm 1/2 in	13 mm 1/2 in
1		4,40	5,50	6,60	8,50
		14,44	18,04	21,65	27,89
2		9,20	11,60	14,50	18,60
		30,18	38,06	47,57	61,02
3		15,30	19,20	23,20	29,80
		50,20	62,99	76,12	97,77
4		21,40	27,30	32,10	40,80
		70,21	89,57	105,31	133,86



### DIMENSIONAL DRAWING



DRUM SIZE	UNITS	A	B
6.5"	mm	585.4	216.0
	in	23.1	8.5
8"	mm	623.4	254.0
	in	24.5	10.0
10"	mm	673.9	304.5
	in	26.5	12.0
12.5"	mm	737.4	368.0
	in	29.0	14.5





# BASAT SERIES PRODUCT DATASHEET

911042-1

MODEL CODE	PART NUMBER	MOTOR TYPE
BASAT 15 TE7T2111	104211	12V DC