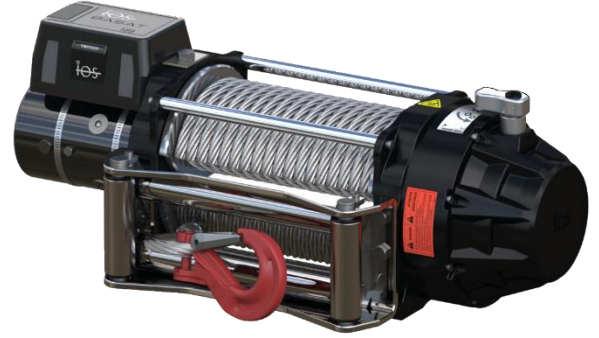


MODEL CODE	PART NUMBER	MOTOR TYPE
BASAT 15 TE7T2112	104212	24V DC

STANDARD COMPLIANCE

EN14492-2 :2019*, SAE J706
 2006/42/EC - EN ISO 121000 :2010, ISO 7637-2 :2004
 2014/30/EU – EN50498 :2010, ISO7637-2 :2011, CISPR 25: 2008
 * Conforms with exceptions



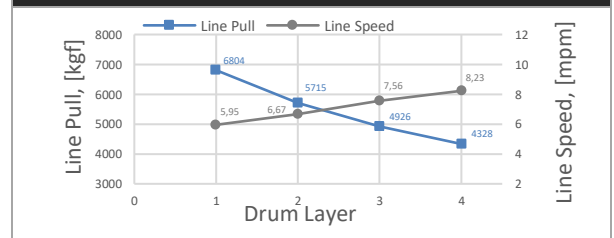
WINCH SPECIFICATIONS

Rated Pulling Force	6804 kgf	15000 lbf
Drum Barrel Diameter	105 mm	4.13 in
Drum Width	252.7 mm	9.95 in
Evaluated Rope Diameter	13 mm	1/2 in
Maximum Wire Rope Diameter	13 mm	1/2 in
Minimum Wire Rope Breaking Strength	12200 kgf	26900 lbf
Recommended Wire Rope Type	7 x 19 WSC	
Maximum Layers of Wire Rope	4	
Gear Train, Reduction	3 Stage Planetary, 329.5:1	
Mounting Bolt Size	M12 X 1.75 Class 8.8	
Mounting Bolt Torque	63-69 Nm	46-51 lbf-ft
Duty Cycle (per EN 1449-2)	3.8 m	12.4 ft
Approximate Shipping Weight	51.0 kg	112.4 lb
Brake Type	Automatic Mechanical Brake	
Sealing	IP68	
UV Rating	1200kJ/m ² per ASTM G154	
Corrosion Resistance	408 hrs per ASTM B117	
Operating Temperature	-40°C to +60°C (-25.6°F to 131°F)	
Decibels	95 Db	

PERFORMANCE BY LAYER

Drum Layer	Line Pull	Line Speed	Rope Capacity
	kgf / lbf	mpm / fpm	m / ft
1	6804 / 15000	5.95 / 19.52	5.5 / 18.1
2	5715 / 12600	6.67 / 21.88	11.6 / 38.1
3	4926 / 10860	7.56 / 24.80	19.2 / 63.0
4	4328 / 9542	8.23 / 27.0	27.3 / 89.6

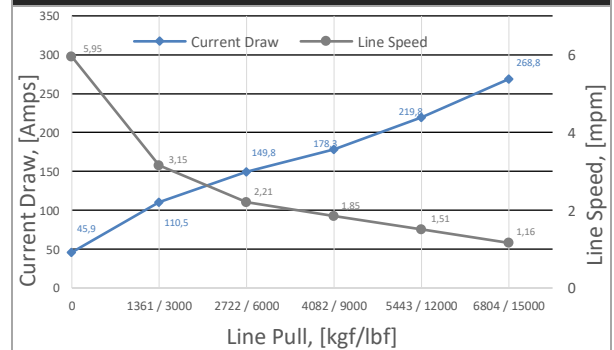
PERFORMANCE BY LAYER



FIRST LAYER PERFORMANCE

Line Pull	Line Speed	Current Draw	Duty Cycle
kgf / lbf	mpm / fpm	Amps	min/10min
0	5.95 / 19.52	45.9	4:00
1361 / 3000	3.15 / 10.33	110.5	2:00
2722 / 6000	2.21 / 7.25	149.8	1:20
4082 / 9000	1.85 / 6.07	178.3	0:45
5443 / 12000	1.51 / 4.96	219.8	0:30
6804 / 15000	1.16 / 3.81	268.8	0:15

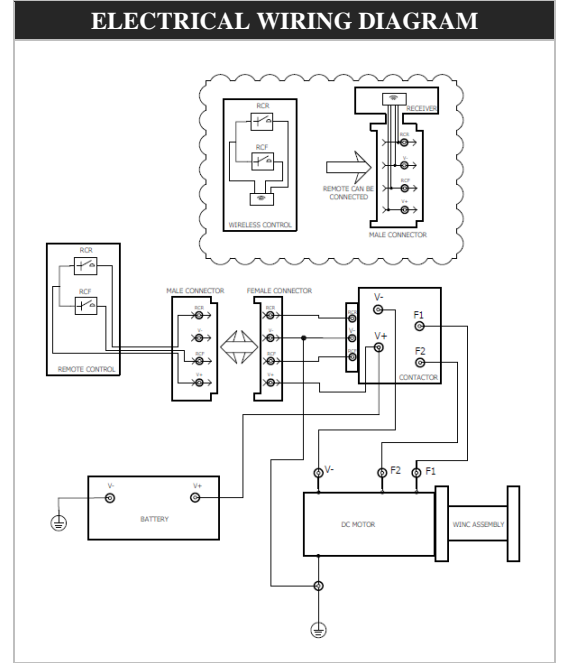
FIRST LAYER PERFORMANCE



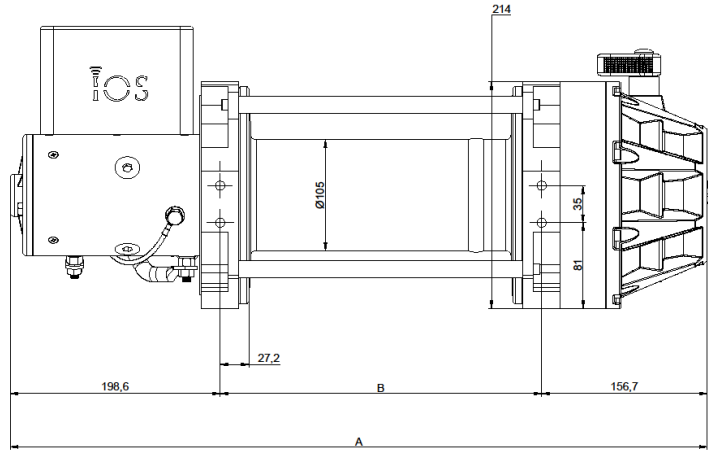
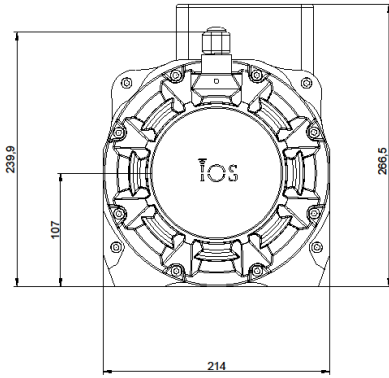
MODEL CODE	PART NUMBER	MOTOR TYPE
BASAT 15 TE7T2112	104212	24V DC

ELECTRICAL SYSTEM REQUIREMENTS	
Battery Voltage	24V
Minimum Battery Rating	650 CCA

DRUM CAPACITY BY LAYER, m / ft					
DRUM LENGTH					
Layer	Rope Dia.	6,5"	8"	10"	12,5"
		13 mm 1/2 in	13 mm 1/2 in	13 mm 1/2 in	13 mm 1/2 in
1		4,40	5,50	6,60	8,50
		14,44	18,04	21,65	27,89
2		9,20	11,60	14,50	18,60
		30,18	38,06	47,57	61,02
3		15,30	19,20	23,20	29,80
		50,20	62,99	76,12	97,77
4		21,40	27,30	32,10	40,80
		70,21	89,57	105,31	133,86



DIMENSIONAL DRAWING



DRUM SIZE	UNITS	A	B
6.5"	mm	571.3	216.0
	in	22.5	8.5
8"	mm	609.3	254.0
	in	24.0	10.0
10"	mm	659.8	304.5
	in	26.0	12.0
12.5"	mm	723.3	368.0
	in	28.5	14.5

