

MODEL CODE	PART NUMBER	MOTOR TYPE
URUZ HYD 12.5 VH6T1111	113111	HYDRAULIC 50 cc



STANDARD COMPLIANCE

EN14492-2 :2019, SAE J706
2006/42/EC - EN ISO 121000 :2010, ISO 7637-2 :2004
2014/30/EU – EN50498 :2010, ISO7637-2 :2011, CISPR 25: 2008

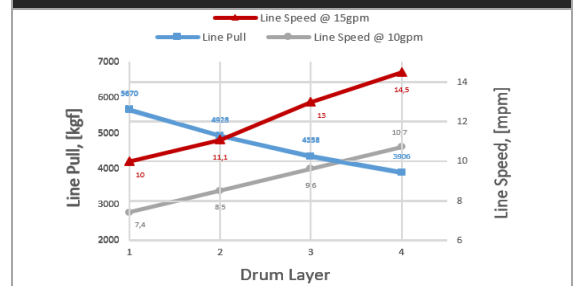
WINCH SPECIFICATIONS

Rated Pulling Force	5670 kgf	12500 lbf
Drum Barrel Diameter	126 mm	4.96 in
Drum Width	197 mm	7.76 in
Evaluated Rope Diameter	Ø12	½ in
Maximum Wire Rope Diameter	Ø14	9/16 in
Minimum Wire Rope Breaking Strength	11105 kgf	24482 lbf
Recommended Wire Rope Type	6 x 29 IWRC	
Maximum Layers of Wire Rope	4	
Gear Train, Reduction	2 Stage Planetary, 48.5:1	
Mounting Bolt Size	M12 X 1.75 Class 8.8	
Mounting Bolt Torque	63-69 Nm	46-51 lbf-ft
Duty Cycle (per EN 1449-2)	N/A	N/A
Approximate Shipping Weight	62.5 kg	137.8 lb
Brake Type	Automatic Mechanical Brake	
Sealing	IP68	
UV Rating	1200kJ/m ² per ASTM G154	
Corrosion Resistance	408 hrs per ASTM B117	
Operating Temperature	-40°C to +60°C (-25.6°F to 131°F)	
Decibels	95 Db	

PERFORMANCE BY LAYER

Drum Layer	Line Pull kgf / lbf	Line Speed		Rope Capacity m / ft
		10gpm	15gpm	
1	5670 / 12500	7,4 / 24,3	10 / 32,8	6,9 / 22,64
2	4928 / 10864	8,5 / 27,9	11,1 / 36,4	14,4 / 47,24
3	4358 / 9605	9,6 / 31,5	13 / 42,6	23,4 / 76,77
4	3906 / 8609	10,7 /	14,5 / 47,6	32,5 / 106,6

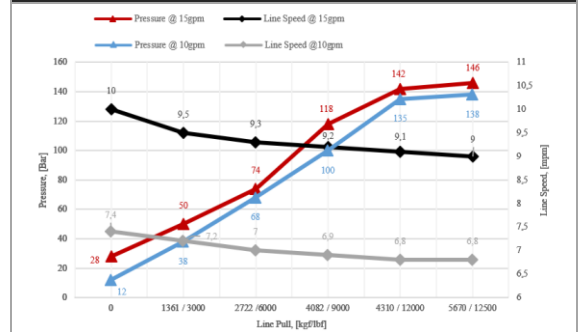
PERFORMANCE BY LAYER



FIRST LAYER PERFORMANCE

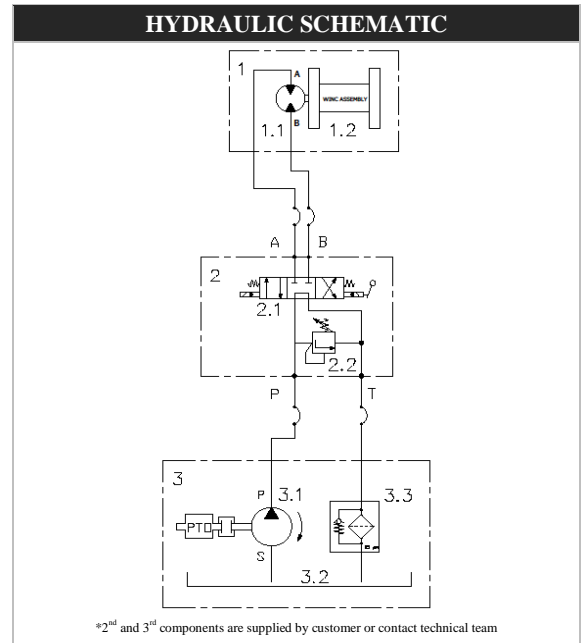
Line Pull kgf / lbf	Line Speed		Pressure		Duty Cycle min/10min
	10gpm	15gpm	10gpm	15gpm	
	mpm / fpm		bar / psi		
0	7,4 / 24,3	10 / 32,8	12 / 174	28 / 406	N/A
1361 / 3000	7,2 / 23,6	9,5 / 31,2	38 / 551,1	50 / 725,2	N/A
2722 / 6000	7 / 23	9,3 / 30,5	68 / 986,3	74 / 1073,3	N/A
4082 / 9000	6,9 / 22,6	9,2 / 30,2	100 / 1450,4	118 / 1711,5	N/A
4310 / 12000	6,8 / 22,3	9,1 / 29,8	135 / 1958	142 / 2059,5	N/A
5670 / 12500	6,8 / 22,3	9 / 29,5	138 / 2001,5	146 / 2117,5	N/A

FIRST LAYER PERFORMANCE



MODEL CODE	PART NUMBER	MOTOR TYPE
URUZ HYD 12.5 VH6T1111	113111	HYDRAULIC 50 cc

HYDRAULIC SYSTEM REQUIREMENTS	
Maximum System Pressure	172 bar / 2500 psi
Maximum Rated Input Flow	60 lpm / 15 gpm



DIMENSIONAL DRAWING

