

MODEL CODE	PART NUMBER	MOTOR TYPE
BASAT 12 HYD VH6T2111	113211	HYDRAULIC 65cc

STANDARD COMPLIANCE

EN14492-2 :2019*, SAE J706
 2006/42/EC - EN ISO 12100 :2010, ISO 7637-2 :2004
 2014/30/EU – EN50498 :2010, ISO7637-2 :2011, CISPR 25: 2008
 *Conforms with exceptions



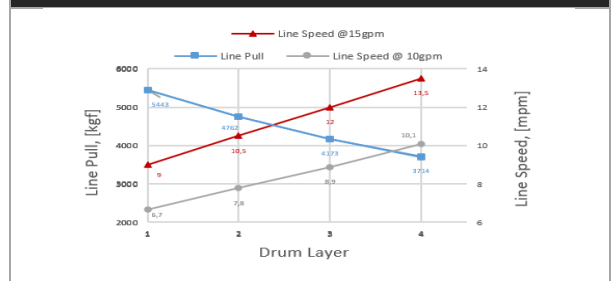
WINCH SPECIFICATIONS

Rated Pulling Force	5443 kgf	12000 lbf
Drum Barrel Diameter	105 mm	4.13 in
Drum Width	252.7 mm	9.95 in
Evaluated Rope Diameter	11.2 mm	7/16 in
Maximum Wire Rope Diameter	13 mm	1/2 in
Minimum Wire Rope Breaking Strength	9610 kgf	21200 lbf
Recommended Wire Rope Type	6 x 29 IWRC	
Maximum Layers of Wire Rope	4	
Gear Train, Reduction	2 Stage Planetary, 33:1	
Mounting Bolt Size	M12 X 1.75 Class 8.8	
Mounting Bolt Torque	63-69 Nm	46-51 lbf-ft
Duty Cycle (per EN 1449-2)	N/A	N/A
Approximate Shipping Weight	50.4 kg	111.12 lb
Brake Type	Automatic Mechanical Brake	
Sealing	IP68	
UV Rating	1200kJ/m ² per ASTM G154	
Corrosion Resistance	408 hrs per ASTM B117	
Operating Temperature	-40°C to +60°C (-25.6°F to 131°F)	
Decibels	95 Db	

PERFORMANCE BY LAYER

Drum Layer	Line Pull kgf / lbf	Line Speed		Rope Capacity m / ft
		10gpm	15gpm	
1	5443 / 12000	6,7 / 22	9 / 29,5	6,2 / 20,3
2	4762 / 10500	7,8 / 25,6	10,5 / 34,4	13 / 42,6
3	4173 / 9200	8,9 / 29,2	12 / 39,4	21,2 / 69,5
4	3714 / 8188	10,1 / 33	13,5 / 44,3	30,4 / 99,7

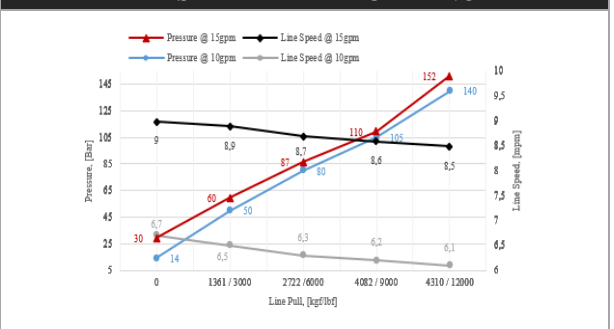
PERFORMANCE BY LAYER



FIRST LAYER PERFORMANCE

Line Pull	Line Speed		Pressure		Duty Cycle
	10gpm	15gpm	10gpm	15gpm	
kgf / lbf	mpm / fpm		bar / psi		min/10 min
0	6,7 / 22	9 / 29,5	14 / 203	30 / 435	N/A
1361 / 3000	6,5 / 21,3	8,9 / 29,2	50 / 725,2	60 / 870	N/A
2722 / 6000	6,3 / 20,7	8,7 / 28,5	80 / 1160	87 / 1261,8	N/A
4082 / 9000	6,2 / 20,3	8,6 / 28,2	105 / 1523	110 / 1595	N/A
4310 / 12000	6,1 / 20	8,5 / 27,9	140 / 2030	152 / 2204,6	N/A

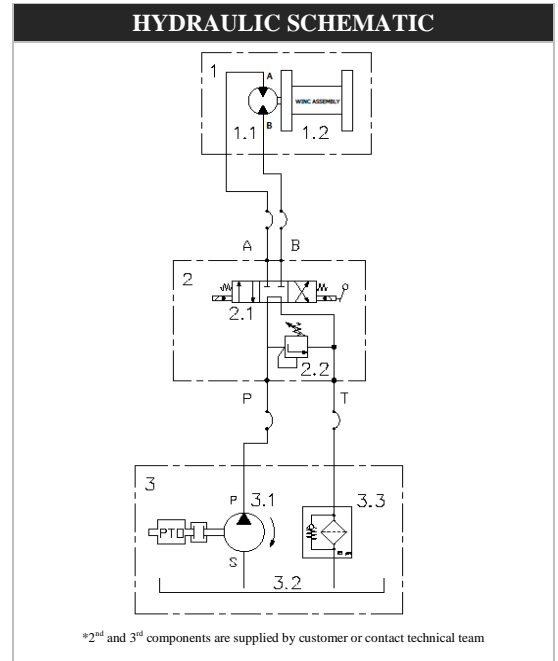
FIRST LAYER PERFORMANCE



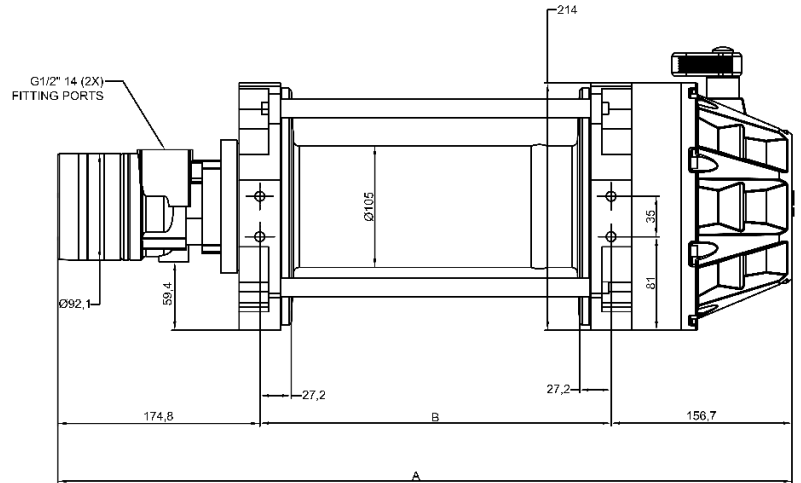
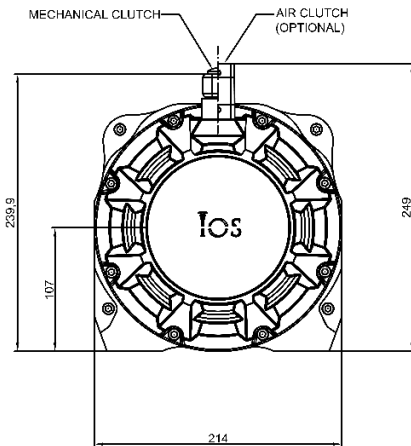
MODEL CODE	PART NUMBER	MOTOR TYPE
BASAT 12 HYD VH6T2111	113211	HYDRAULIC 65cc

HYDRAULIC SYSTEM REQUIREMENTS	
Maximum System Pressure	172 bar / 2500 psi
Maximum Rated Input Flow	60 lpm / 15 gpm

DRUM CAPACITY BY LAYER, m / ft									
DRUM LENGTH									
		6,5"		8"		10"		12.5"	
Layer	Rope Dia.	11 mm	13 mm	11 mm	13 mm	11 mm	13 mm	11 mm	13 mm
		3/8 in	1/2 in	3/8 in	1/2 in	3/8 in	1/2 in	3/8 in	1/2 in
1		5.1	4.4	6.2	5.5	7.6	6.6	9.8	8.5
		16.7	14.4	20.3	18.0	24.9	21.7	32.2	27.9
2		10.6	9.2	13.0	11.6	16.5	14.5	21.1	18.6
		34.8	30.2	42.7	38.1	54.1	47.6	69.2	61.0
3		16.9	15.3	21.2	19.2	26.2	23.2	33.7	29.8
		55.4	50.2	69.6	63.0	86.0	76.1	110.6	97.8
4		23.5	21.4	30.4	27.3	36.7	32.1	48.4	40.8
		77.1	70.1	99.7	89.6	120.4	105.3	158.8	133.9



DIMENSIONAL DRAWING



DRUM SIZE	UNITS	A	B
6.5"	mm	547.5	216.0
	in	21.6	8.5
8"	mm	585.5	254.0
	in	23.1	10.0
10"	mm	636.0	304.5
	in	25.0	12.0
12.5"	mm	699.5	368.0
	in	27.5	14.5

