

MODEL CODE	PART NUMBER	MOTOR TYPE
BASAT HYD 12 AIR VH6T2112	113212	HYDRAULIC 65 cc

STANDARD COMPLIANCE

EN14492-2 :2019*, SAE J706
 2006/42/EC - EN ISO 121000 :2010, ISO 7637-2 :2004
 2014/30/EU – EN50498 :2010, ISO7637-2 :2011, CISPR 25: 2008
 *Conforms with exceptions



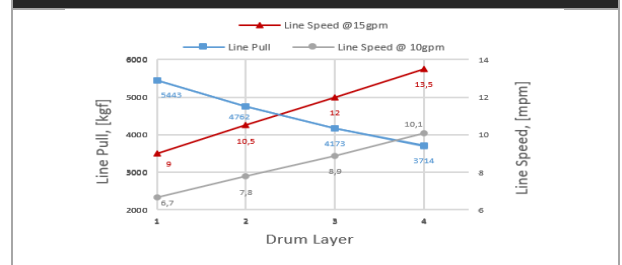
WINCH SPECIFICATIONS

Rated Pulling Force	5443 kgf	12000 lbf
Drum Barrel Diameter	105 mm	4.13 in
Drum Width	252.7 mm	9.95 in
Evaluated Rope Diameter	11.2 mm	7/16 in
Maximum Wire Rope Diameter	13 mm	1/2 in
Minimum Wire Rope Breaking Strength	9610 kgf	21200 lbf
Recommended Wire Rope Type	6 x 29 IWRC	
Maximum Layers of Wire Rope	4	
Gear Train, Reduction	2 Stage Planetary, 33:1	
Mounting Bolt Size	M12 X 1.75 Class 8.8	
Mounting Bolt Torque	63-69 Nm	46-51 lbf-ft
Duty Cycle (per EN 1449-2)	N/A	N/A
Approximate Shipping Weight	50.4 kg	111.12 lb
Brake Type	Automatic Mechanical Brake	
Sealing	IP68	
UV Rating	1200kJ/m ² per ASTM G154	
Corrosion Resistance	408 hrs per ASTM B117	
Operating Temperature	-40°C to +60°C (-25.6°F to 131°F)	
Decibels	95 Db	

PERFORMANCE BY LAYER

Drum Layer	Line Pull	Line Speed		Rope Capacity
	kgf / lbf	10gpm	15gpm	m / ft
1	5443 / 12000	6,7 / 22	9 / 29,5	6,2 / 20,3
2	4762 / 10500	7,8 / 25,6	10,5 / 34,4	13 / 42,6
3	4173 / 9200	8,9 / 29,2	12 / 39,4	21,2 / 69,5
4	3714 / 8188	10,1 / 33	13,5 / 44,3	30,4 / 99,7

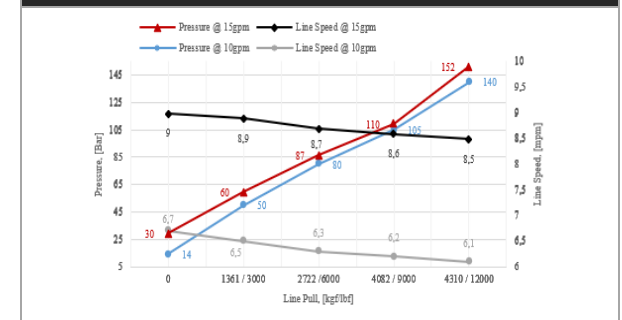
PERFORMANCE BY LAYER



FIRST LAYER PERFORMANCE

Line Pull	Line Speed		Pressure		Duty Cycle
	10gpm	15gpm	10gpm	15gpm	
kgf / lbf	mpm / fpm		bar / psi		min/10 min
0	6,7 / 22	9 / 29,5	14 / 203	30 / 435	N/A
1361 / 3000	6,5 / 21,3	8,9 / 29,2	50 / 725,2	60 / 870	N/A
2722 / 6000	6,3 / 20,7	8,7 / 28,5	80 / 1160	87 / 1261,8	N/A
4082 / 9000	6,2 / 20,3	8,6 / 28,2	105 / 1523	110 / 1595	N/A
4310 / 12000	6,1 / 20	8,5 / 27,9	140 / 2030	152 / 2204,6	N/A

FIRST LAYER PERFORMANCE



MODEL CODE	PART NUMBER	MOTOR TYPE
BASAT HYD 12 AIR VH6T2112	113212	HYDRAULIC 65 cc

HYDRAULIC SYSTEM REQUIREMENTS

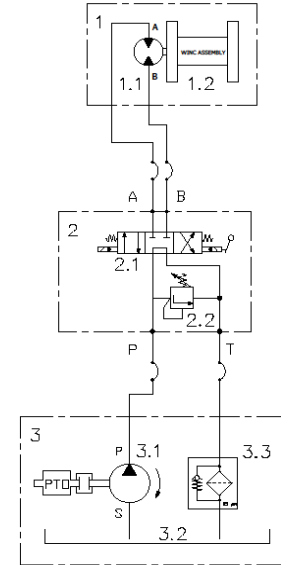
Maximum System Pressure	172 bar / 2500 psi
Maximum Rated Input Flow	60 lpm / 15 gpm

DRUM CAPACITY BY LAYER, m / ft

DRUM LENGTH

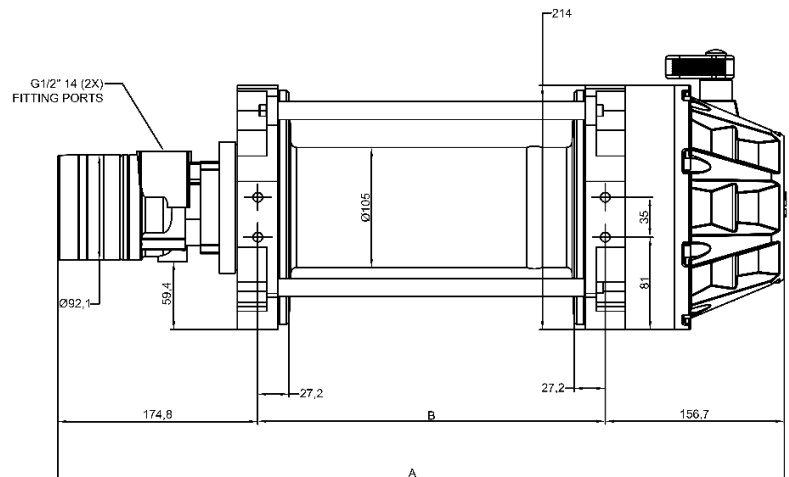
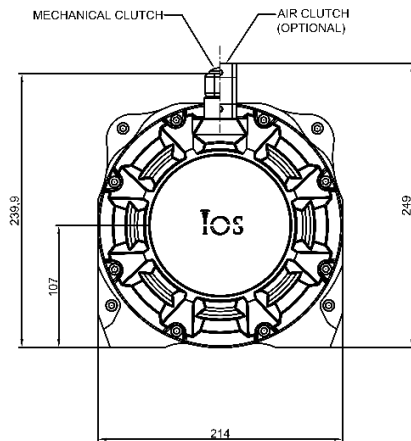
Layer	6,5"		8"		10"		12,5"	
	Rope Dia.							
	11 mm 3/8 in	13 mm 1/2 in	11 mm 3/8 in	13 mm 1/2 in	11 mm 3/8 in	13 mm 1/2 in	11 mm 3/8 in	13 mm 1/2 in
1	5.1 16.7	4.4 14.4	6.2 20.3	5.5 18.0	7.6 24.9	6.6 21.7	9.8 32.2	8.5 27.9
2	10.6 34.8	9.2 30.2	13.0 42.7	11.6 38.1	16.5 54.1	14.5 47.6	21.1 69.2	18.6 61.0
3	16.9 55.4	15.3 50.2	21.2 69.6	19.2 63.0	26.2 86.0	23.2 76.1	33.7 110.6	29.8 97.8
4	23.5 77.1	21.4 70.1	30.4 99.7	27.3 89.6	36.7 120.4	32.1 105.3	48.4 158.8	40.8 133.9

HYDRAULIC SCHEMATIC



*2nd and 3rd components are supplied by customer or contact technical team

DIMENSIONAL DRAWING



DRUM SIZE	UNITS	A	B
6.5"	mm	547.5	216.0
	in	21.6	8.5
8"	mm	585.5	254.0
	in	23.1	10.0
10"	mm	636.0	304.5
	in	25.0	12.0
12.5"	mm	699.5	368.0
	in	27.5	14.5

