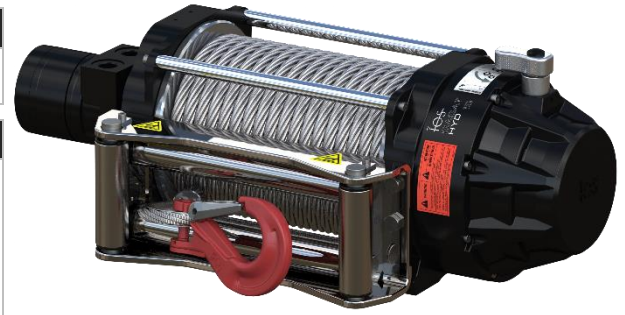


MODEL CODE	PART NUMBER	MOTOR TYPE
BASAT HYD 15 VH7T2111	114211	HYDRAULIC 80 cc



STANDARD COMPLIANCE

EN14492-2 :2019*, SAE J706
 2006/42/EC - EN ISO 121000 :2010, ISO 7637-2 :2004
 2014/30/EU – EN50498 :2010, ISO7637-2 :2011, CISPR 25: 2008
 *Conforms with exceptions

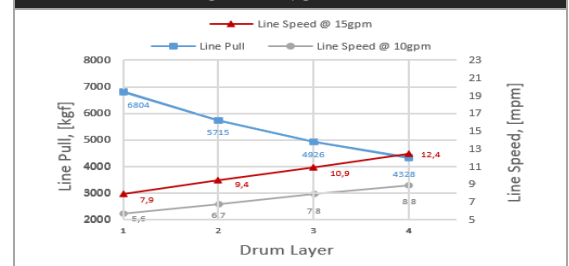
WINCH SPECIFICATIONS

Rated Pulling Force	6804 kgf	15000 lbf
Drum Barrel Diameter	105 mm	4.13 in
Drum Width	252.7 mm	9.95 in
Evaluated Rope Diameter	13 mm	1/2 in
Maximum Wire Rope Diameter	13 mm	1/2 in
Minimum Wire Rope Breaking Strength	12200 kgf	26900 lbf
Recommended Wire Rope Type	7 x 19 WSC	
Maximum Layers of Wire Rope	4	
Gear Train, Reduction	2 Stage Planetary, 33:1	
Mounting Bolt Size	M12 X 1.75 Class 8.8	
Mounting Bolt Torque	63-69 Nm	46-51 lbf-ft
Duty Cycle (per EN 1449-2)	N/A	N/A
Approximate Shipping Weight	51.0 kg	112.4 lb
Brake Type	Automatic Mechanical Brake	
Sealing	IP68	
UV Rating	1200kJ/m ² per ASTM G154	
Corrosion Resistance	408 hrs per ASTM B117	
Operating Temperature	-40°C to +60°C (-25.6°F to 131°F)	
Decibels	95 Db	

PERFORMANCE BY LAYER

Drum Layer	Line Pull kgf / lbf	Line Speed		Rope Capacity m / ft
		10gpm	15gpm	
1	6804	5,6 / 18,4	7,9 / 25,9	5,5 / 18
2	5715	6,7 / 22	9,4 / 30,8	11,6 / 38
3	4926	7,8 / 25,6	10,9 / 35,7	19,2 / 62,9
4	4328	8,8 / 28,9	12,4 / 40,7	27,3 / 89,5

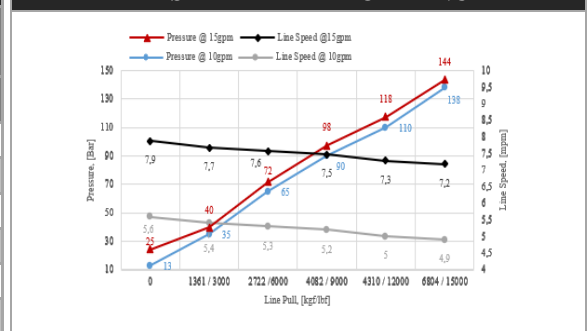
PERFORMANCE BY LAYER



FIRST LAYER PERFORMANCE

Line Pull kgf / lbf	Line Speed		Pressure		Duty Cycle min/10 min
	10gpm	15gpm	10gpm	15gpm	
	mpm / fpm		bar / psi		
0	5,6 / 18,4	7,9 / 25,9	13 / 188,5	25 / 362,6	N/A
1361 / 3000	5,4 / 17,7	7,7 / 25,3	35 / 507,6	40 / 580	N/A
2722 / 6000	5,3 / 17,4	7,6 / 24,9	65 / 942,7	72 / 1044	N/A
4082 / 9000	5,2 / 17,1	7,5 / 24,6	90 / 1305	98 / 1421,4	N/A
4310 / 12000	5 / 16,4	7,3 / 23,9	110 / 1595	118 / 1712	N/A
6804 / 15000	4,9 / 16,1	7,2 / 23,6	138 / 2002	144 / 2089	N/A

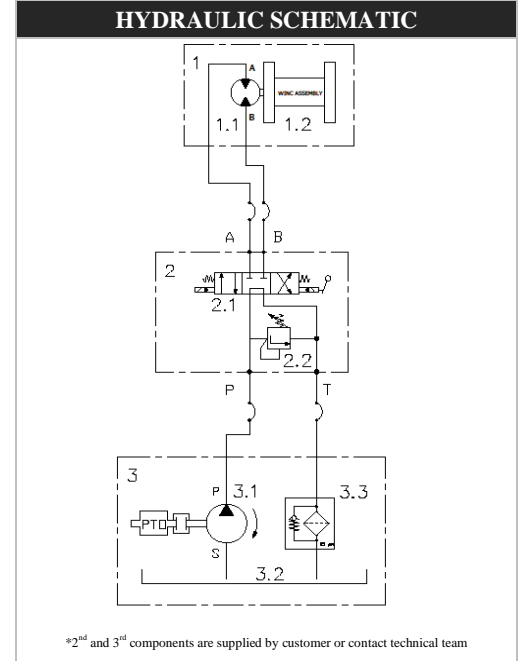
FIRST LAYER PERFORMANCE



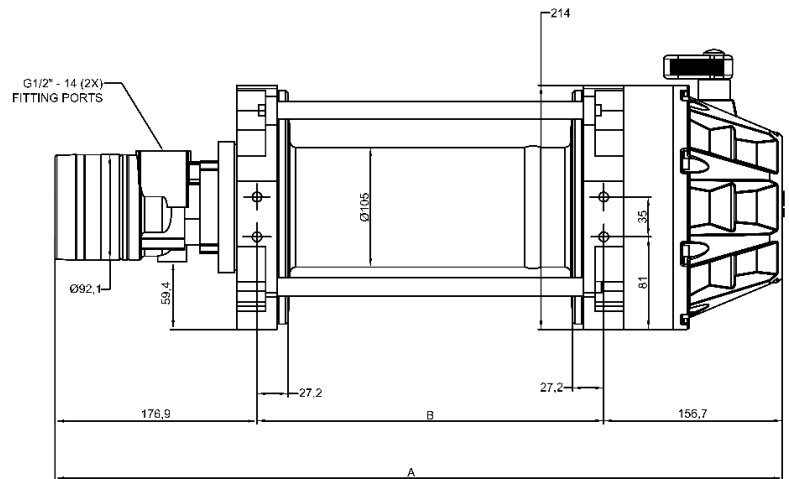
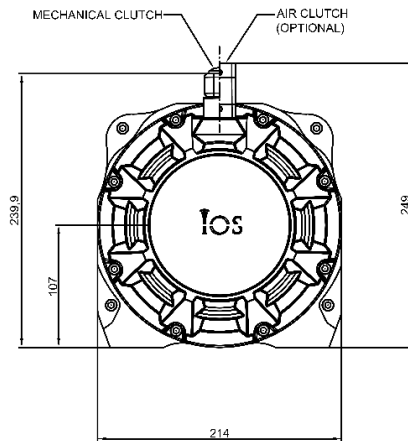
MODEL CODE	PART NUMBER	MOTOR TYPE
BASAT HYD 15 VH7T2111	114211	HYDRAULIC 80 cc

HYDRAULIC SYSTEM REQUIREMENTS	
Maximum System Pressure	172 bar / 2500 psi
Maximum Rated Input Flow	60 lpm / 15 gpm

DRUM CAPACITY BY LAYER, m / ft					
DRUM LENGTH					
Layer	Rope Dia.	6,5"	8"	10"	12,5"
		13 mm 1/2 in	13 mm 1/2 in	13 mm 1/2 in	13 mm 1/2 in
1		4,40	5,50	6,60	8,50
		14,44	18,04	21,65	27,89
2		9,20	11,60	14,50	18,60
		30,18	38,06	47,57	61,02
3		15,30	19,20	23,20	29,80
		50,20	62,99	76,12	97,77
4		21,40	27,30	32,10	40,80
		70,21	89,57	105,31	133,86



DIMENSIONAL DRAWING



DRUM SIZE	UNITS	A	B
6.5"	mm	549.6	216.0
	in	21.6	8.5
8"	mm	587.6	254.0
	in	23.1	10.0
10"	mm	638.1	304.5
	in	25.1	12.0
12.5"	mm	701.6	368.0
	in	27.6	14.5

