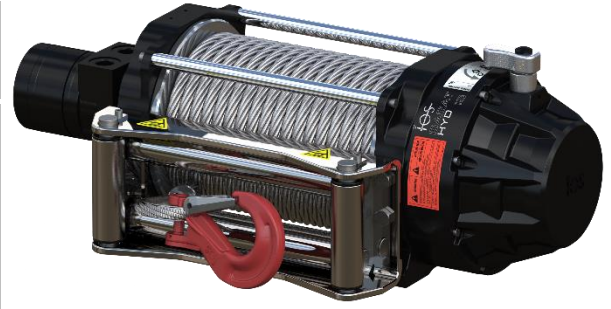


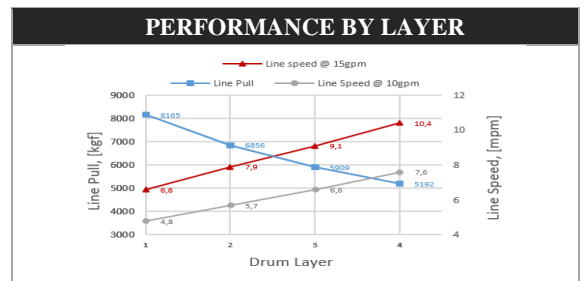
MODEL CODE	PART NUMBER	MOTOR TYPE
BASAT HYD 18 VH8T2111	115211	HYDRAULIC 100 cc



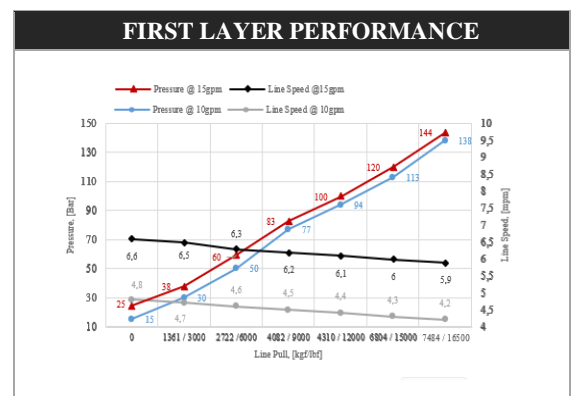
STANDARD COMPLIANCE
EN14492-2 :2019*, SAE J706
2006/42/EC - EN ISO 121000 :2010, ISO 7637-2 :2004
2014/30/EU – EN50498 :2010, ISO7637-2 :2011, CISPR 25: 2008
*Conforms with exceptions

WINCH SPECIFICATIONS		
Rated Pulling Force	8165 kgf	18000 lbf
Drum Barrel Diameter	105 mm	4.13 in
Drum Width	252.7 mm	9.95 in
Evaluated Rope Diameter	13 mm	1/2 in
Maximum Wire Rope Diameter	13 mm	1/2 in
Minimum Wire Rope Breaking Strength	12200 kgf	26900 lbf
Recommended Wire Rope Type	7 x 19 WSC	
Maximum Layers of Wire Rope	4	
Gear Train, Reduction	3 Stage Planetary, 33:1	
Mounting Bolt Size	M12 X 1.75 Class 8.8	
Mounting Bolt Torque	63-69 Nm	46-51 lbf-ft
Duty Cycle (per EN 1449-2)	N/A	N/A
Approximate Shipping Weight	52 kg	114.63 lb
Brake Type	Automatic Mechanical Brake	
Sealing	IP68	
UV Rating	1200kJ/m <sup>2</sup> per ASTM G154	
Corrosion Resistance	408 hrs per ASTM B117	
Operating Temperature	-40°C to +60°C (-25.6°F to 131°F)	
Decibels	95 Db	

PERFORMANCE BY LAYER				
Drum Layer	Line Pull kgf / lbf	Line Speed		Rope Capacity m / ft
		10gpm	15gpm	
1	8165 / 18000	4,8 / 15,7	6,6 / 21,6	5,5 / 18
2	6856 / 15000	5,7 / 18,7	7,9 / 25,9	11,6 / 38
3	5909 / 13000	6,6 / 21,6	9,1 / 29,8	19,2 / 62,9
4	5192 / 11500	7,6 / 24,9	10,4 / 34,1	27,3 / 89,5



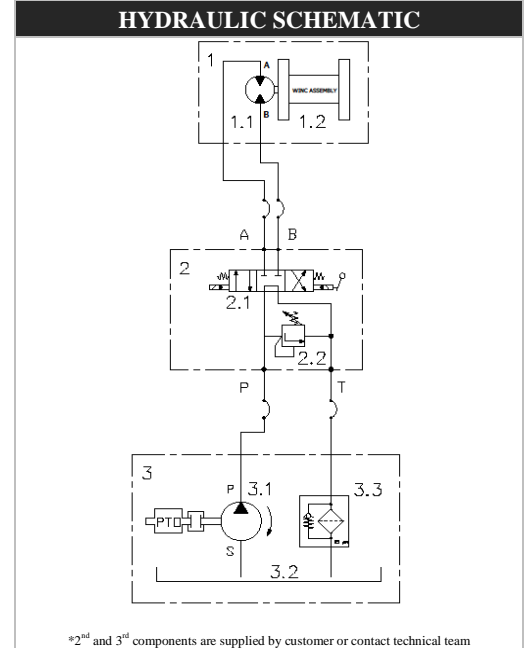
FIRST LAYER PERFORMANCE					
Line Pull	Line Speed		Pressure		Duty Cycle
	10gpm	15gpm	10gpm	15gpm	
kgf / lbf	mpm / fpm		bar / psi		min/10 min
0	4,8 / 15,7	6,6 / 21,6	15 / 217,6	25 / 362,6	N/A
1361 / 3000	4,7 / 15,4	6,5 / 21,3	30 / 435	38 / 551	N/A
2722 / 6000	4,6 / 15,1	6,3 / 20,6	50 / 725,2	60 / 870,2	N/A
4082 / 9000	4,5 / 14,8	6,2 / 20,3	77 / 1116,8	83 / 1203,8	N/A
4310 / 12000	4,4 / 14,4	6,1 / 20	94 / 1363,4	100 / 1450,4	N/A
6804 / 15000	4,3 / 14,1	6 / 19,7	113 / 1639	120 / 1740,5	N/A
8165 / 18000	4,2 / 13,8	5,9 / 19,4	138 / 2001,5	144 / 2088,5	N/A



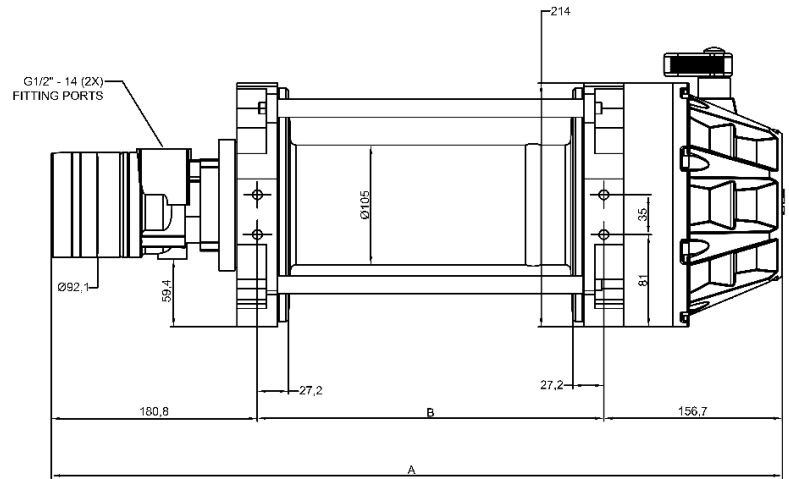
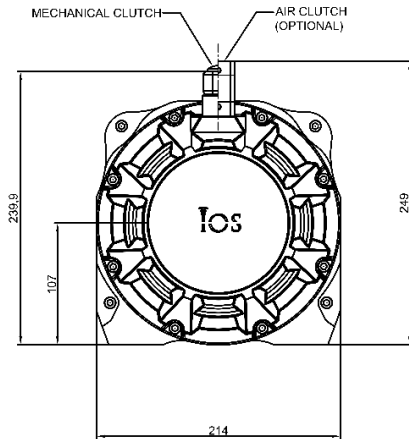
MODEL CODE	PART NUMBER	MOTOR TYPE
BASAT HYD 18 VH8T2111	115211	HYDRAULIC 100 cc

HYDRAULIC SYSTEM REQUIREMENTS	
Maximum System Pressure	172 bar / 2500 psi
Maximum Rated Input Flow	60 lpm / 15 gpm

DRUM CAPACITY BY LAYER, ft / m				
DRUM LENGTH				
Rope Dia.	6,5"	8"	10"	12,5"
	13mm	13mm	13mm	13mm
Layer	1/2"	1/2"	1/2"	1/2"
1	4,40	5,50	6,60	8,50
	14,44	18,04	21,65	27,89
2	9,20	11,60	14,50	18,60
	30,18	38,06	47,57	61,02
3	15,30	19,20	23,20	29,80
	50,20	62,99	76,12	97,77
4	21,40	27,30	32,10	40,80
	70,21	89,57	105,31	133,86



## DIMENSIONAL DRAWING



DRUM SIZE	UNITS	A	B
6.5"	mm	553.5	216.0
	in	21.8	8.5
8"	mm	591.5	254.0
	in	23.3	10.0
10"	mm	642.0	304.5
	in	25.3	12.0
12.5"	mm	705.5	368.0
	in	27.8	14.5

